

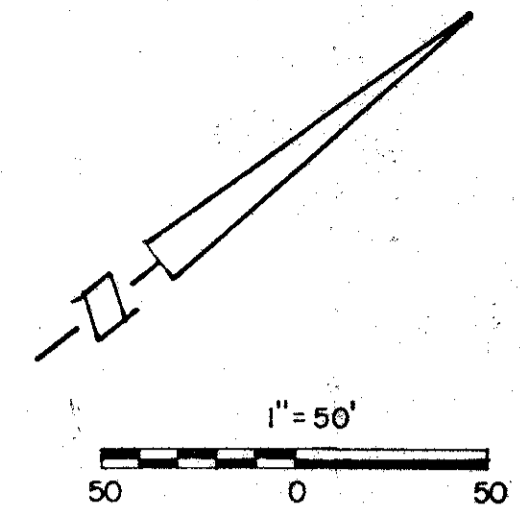
52/169

169

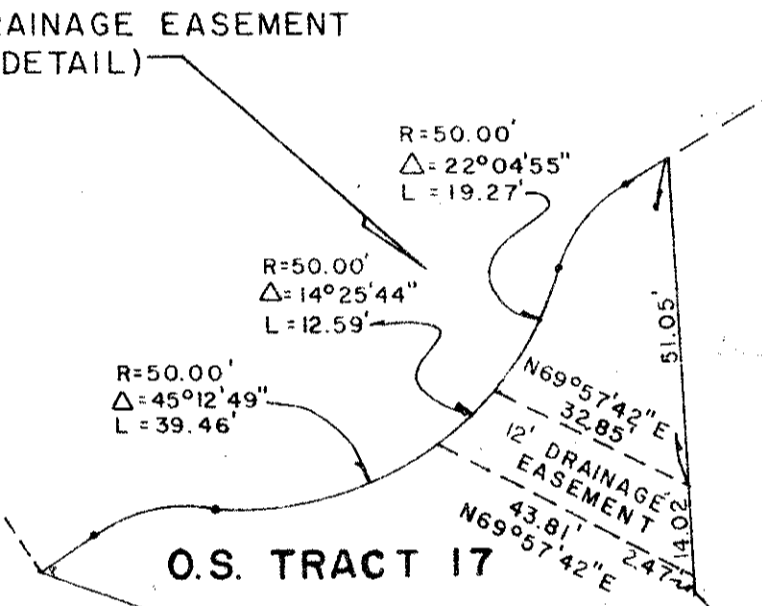
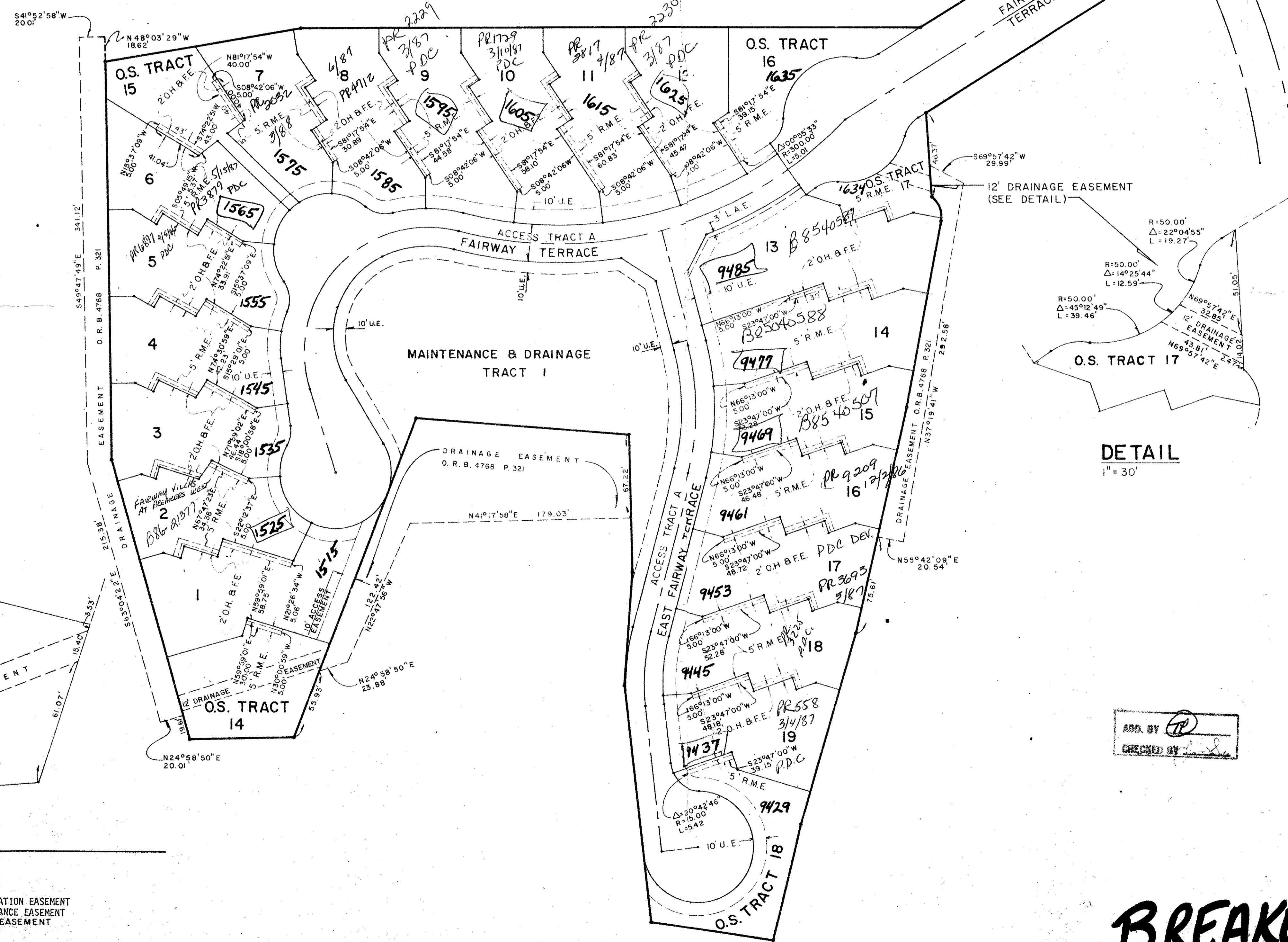
BREAKERS WEST PLAT NO. 10 "FAIRWAY VILLAS"

LYING IN SECTION 30, TOWNSHIP 43 SOUTH, RANGE 42 EAST
BEING A REPLAT OF PART OF PALM BEACH FARMS COMPANY, PLAT NO. 3
PALM BEACH COUNTY, FLORIDA
SHEET 3 OF 3 SHEETS

DECEMBER 1985
Hutcheon Engineers
CIVIL ENGINEERS & SURVEYORS
WEST PALM BEACH
BELLE GLADE STUART



EASEMENT DETAIL



30/103/02
SUBDIVISION: Breakers West
BOOK: 52 PAGE: 167
FLOOD ZONE: B FLOOD MAP # 150A
QUAD: 46
SE
PUD NAME: PR-10

APP. BY: [Signature]
CHECKED BY: [Signature]

0217-009

52/169

BREAKERS WEST PLAT #10

DRAWING NUMBER

DRAWING NUMBER

DRAWING NUMBER

- LEGEND**
- U.E. = DENOTES UTILITIES EASEMENT
 - D.E. = DENOTES DRAINAGE EASEMENT
 - O.H. & F.E. = DENOTES OVERHANG AND FOUNDATION EASEMENT
 - R.M.E. = DENOTES RECIPROCAL MAINTENANCE EASEMENT
 - L.A.E. = DENOTES LIMITED ACCESS EASEMENT